

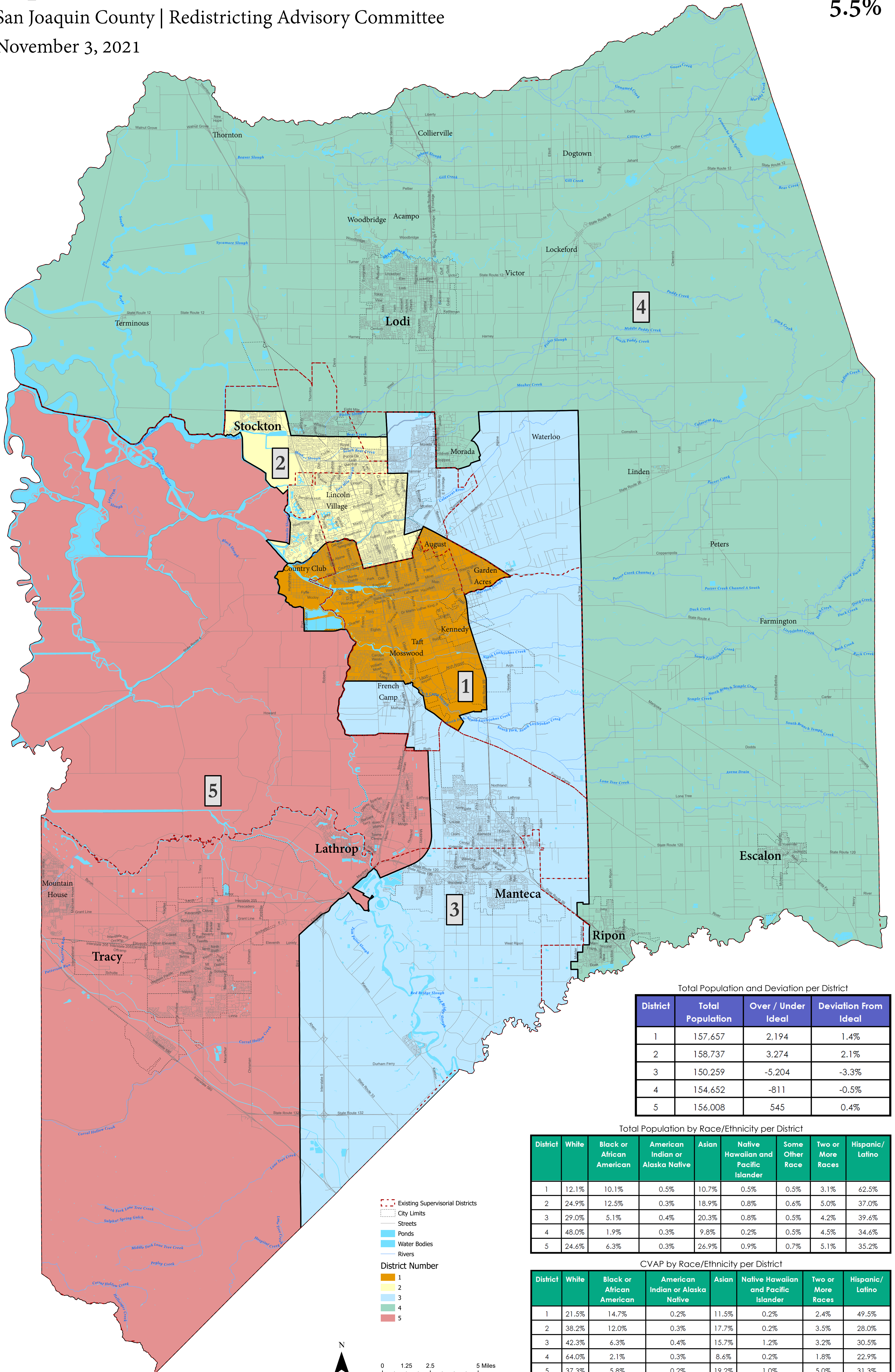
# Supervisory Districts Draft Plan D2

San Joaquin County | Redistricting Advisory Committee

November 3, 2021

Total Deviation

**5.5%**



Total Population and Deviation per District

District	Total Population	Over / Under Ideal	Deviation From Ideal
1	157,657	2,194	1.4%
2	158,737	3,274	2.1%
3	150,259	-5,204	-3.3%
4	154,652	-811	-0.5%
5	156,008	545	0.4%

Total Population by Race/Ethnicity per District

District	White	Black or African American	American Indian or Alaska Native	Asian	Native Hawaiian and Pacific Islander	Some Other Race	Two or More Races	Hispanic/Latino
1	12.1%	10.1%	0.5%	10.7%	0.5%	0.5%	3.1%	62.5%
2	24.9%	12.5%	0.3%	18.9%	0.8%	0.6%	5.0%	37.0%
3	29.0%	5.1%	0.4%	20.3%	0.8%	0.5%	4.2%	39.6%
4	48.0%	1.9%	0.3%	9.8%	0.2%	0.5%	4.5%	34.6%
5	24.6%	6.3%	0.3%	26.9%	0.9%	0.7%	5.1%	35.2%

CVAP by Race/Ethnicity per District

District	White	Black or African American	American Indian or Alaska Native	Asian	Native Hawaiian and Pacific Islander	Two or More Races	Hispanic/Latino
1	21.5%	14.7%	0.2%	11.5%	0.2%	2.4%	49.5%
2	38.2%	12.0%	0.3%	17.7%	0.2%	3.5%	28.0%
3	42.3%	6.3%	0.4%	15.7%	1.2%	3.2%	30.5%
4	64.0%	2.1%	0.3%	8.6%	0.2%	1.8%	22.9%
5	37.3%	5.8%	0.2%	19.2%	1.0%	5.0%	31.3%